

RefectoCil
Intense Brow[n]s™

**FULL
BROW
TECHNIQUE**

**OMBRÉ
SHADING
TECHNIQUE**

**BROW
FILLING
TECHNIQUE**



FULL BROW TECHNIQUE



The Full Brow Technique is the basic application that ensures a smooth and full-surface color build-up on the skin and hair. For a particularly intense look

Ideal for: Customers who want a strong effect or where a remodeling of the eyebrow is necessary, e.g. hairs are missing.



1

Cleaning

Clean eyebrows before tinting using the **RefectoCil Micellar Eye Make-up Remover** (or **RefectoCil Brow & Lash Foam**).

Note: Exfoliation of the brows plays an important role in achieving an even and smooth result of the skin staining.

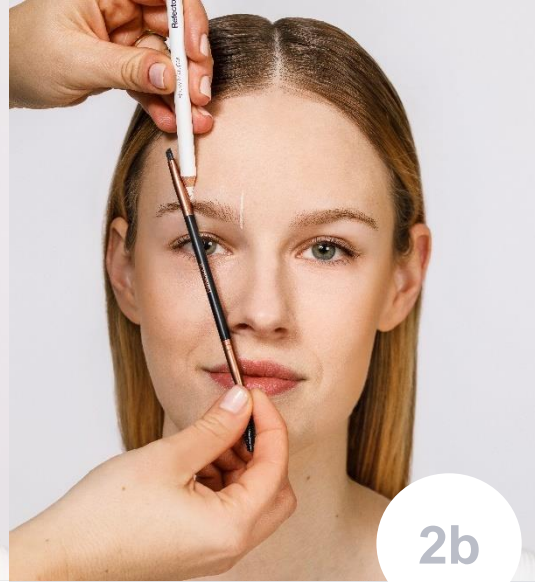


2a

Mapping

Measure the perfect brow shape with the **RefectoCil Brow Mapper**.

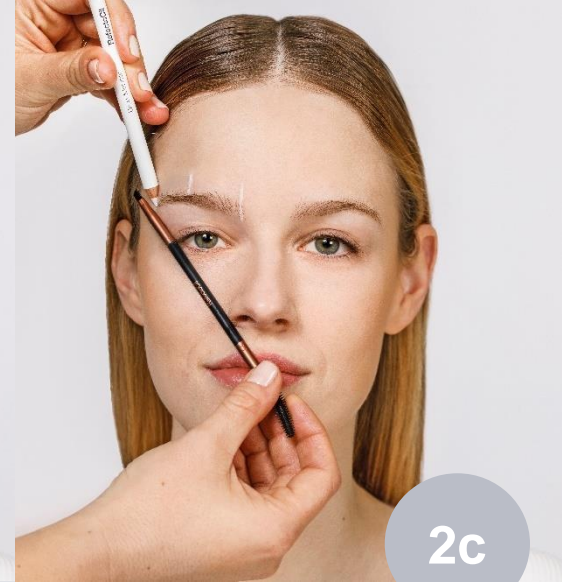
Start of eyebrow: Don't hold the brush to the outer edge of the nose, but to the nostril: This is where the eyebrow begins.



2b

Mapping

Beginning of arch: Hold the brush at an angle across the eye, through the outer edge of the pupil: This is where the arch begins.



2c

Mapping

End of eyebrow: Hold the pen at an angle from the nostril to the outer corner of the eye: This is where the eyebrow ends.



Mapping

Connect the lines and draw a frame in the desired shape of the brows.

For the most precise shape, use the advanced Brow Mapping method.



Primer

Choose the product according to the skin type. Open the **Intensifying Primer** and put a pea-sized amount into one of the cosmetic dishes. Apply the **Intensifying Primer** to the eyebrows and skin with the RefectoCil cosmetic brush.
Application time: 4 minutes.



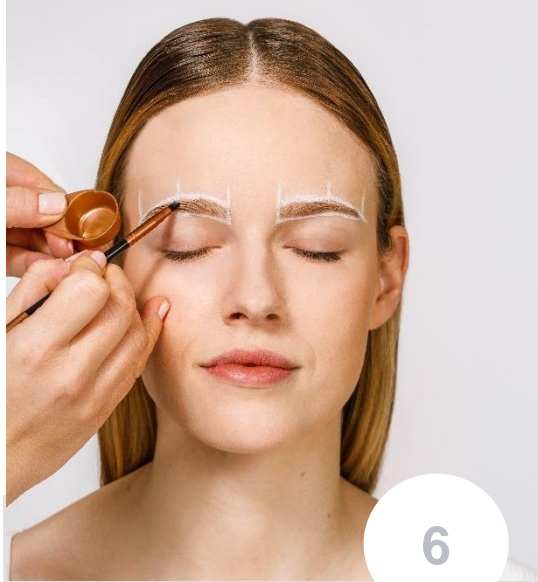
Remove

Remove the **RefectoCil Intense Brow[n]s Intensifying Primer** using a dry cotton swab.



Wait!

Important: Let the brows dry for **4 minutes** before the next step!
To achieve best results the brows have to be dry before the next step.



Base Gel

Use a clean brush. Select the desired colour. Open the **Base Gel (Step 1)** and squeeze a pea-sized amount of it into a clean cosmetic dish. Apply the **Base Gel** to brows & skin evenly in the direction of hair growth. **Application time: 2 minutes!**



Remove

Remove **Base Gel** using a dry cotton swab.



Wait!

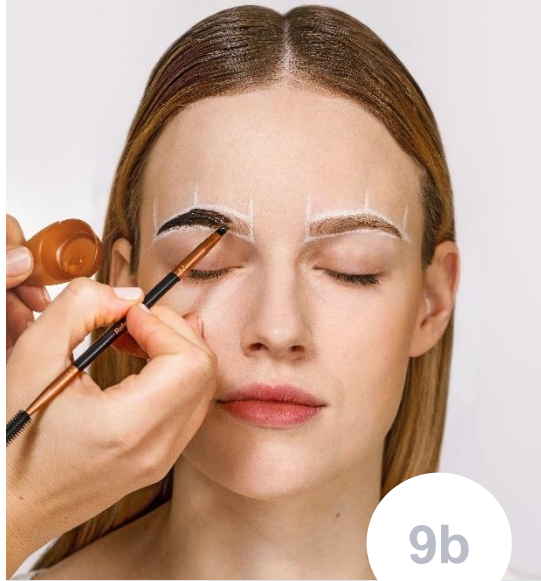
Important: Let the brows dry for **4 minutes** before the next step.



Activator Gel

Use a clean brush. Open the **Activator Gel (Step 2)**. Squeeze a pea-sized amount of the **Activator Gel** into a clean cosmetic dish and apply the Activator Gel to brows & skin. **Start brushing at the end of the brow. Every time you have to grab more activator, clean your brush on a tissue and then grab fresh activator.**

03



Activator Gel

Continue to the middle and front part. Work very precisely.

Application time: 1 minute

(Activator Gel lets the hair appear to be very dark, but this is not the final tinting result)



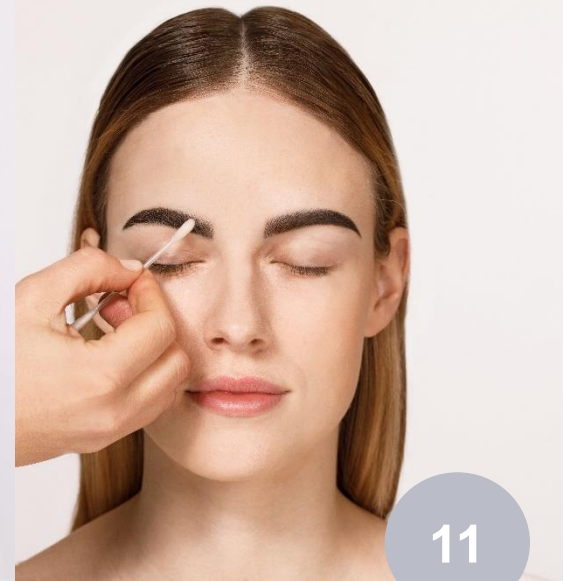
Activator Gel

If needed: Use a little bit of RefectoCil Skin Protection Cream & Eye Mask to correct the brow shape.



Remove

Remove Activator Gel with a wet cotton pad.



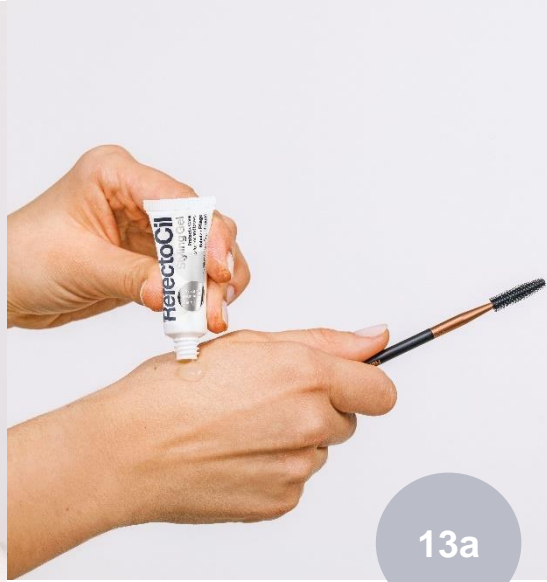
Final Touch

Remove any unwanted stains using a dry cotton swab with the **RefectoCil Intense Brow[n]s Tint Remover**. Use the **RefectoCil Intense Brow[n]s Tint Remover** to correct the shape of the brows if needed or to remove tint spots.



Shape

Now you can shape the brows with the **RefectoCil Precision Brow Tweezer**.



Care

Apply the **RefectoCil Styling Gel** to nourish the eyebrow hair and provide shine.



Care

Info - In the salon:
For hygienic reasons it is important not to use the same brush on all customers.
Remove the **Styling Gel** from the tube with a clean RefectoCil brush and apply it with the rubber spoolie.



Effect

Full Brow Look

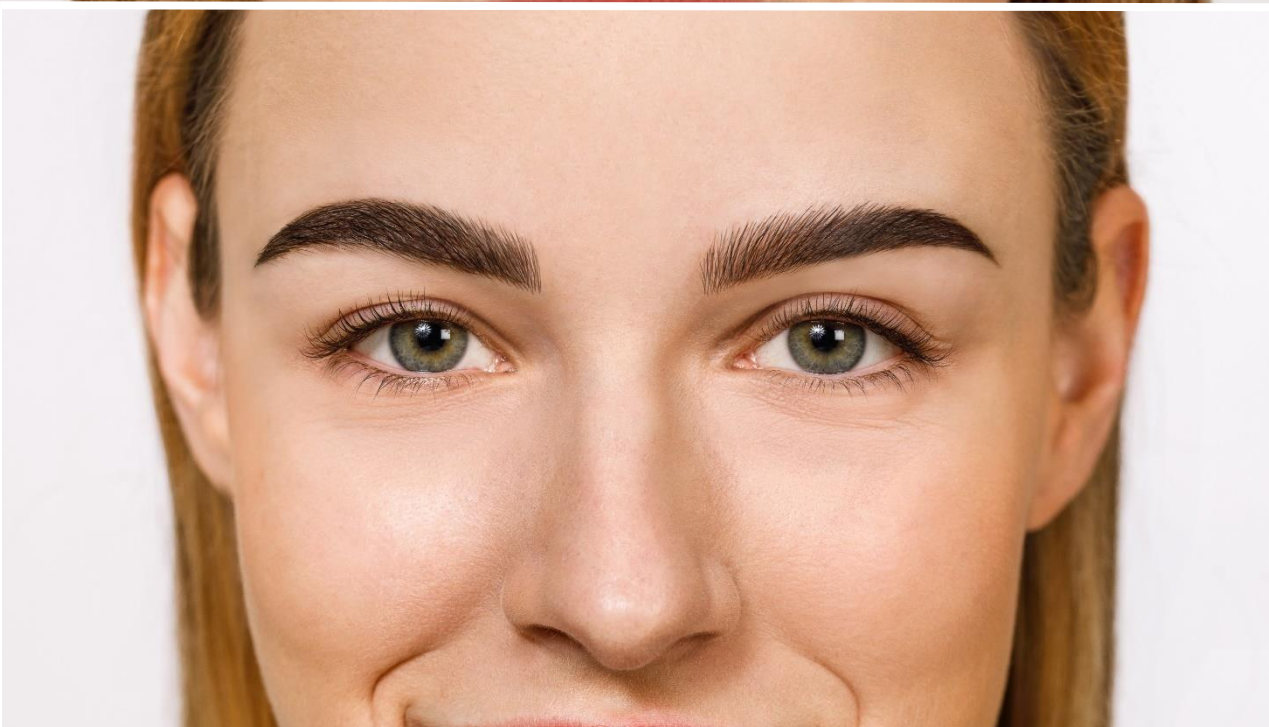


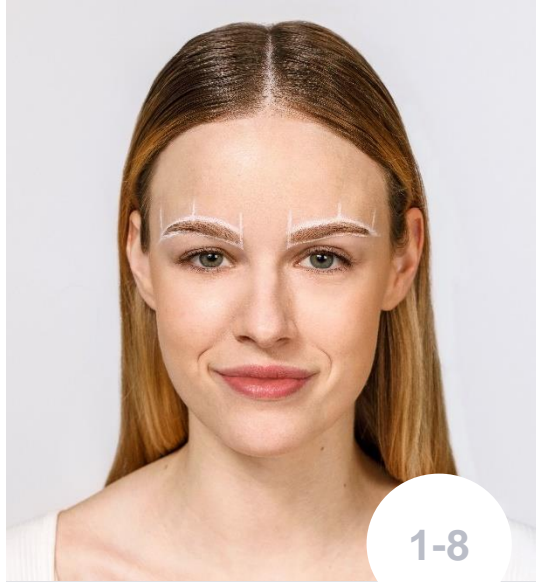
OMBRÉ SHADING TECHNIQUE



The Ombre Shading Tequique ensures a wonderful and gentle color gradient. The eyebrow is intensely emphasized in the back, while it becomes brighter in the front third, providing a very natural, feathery-light look.

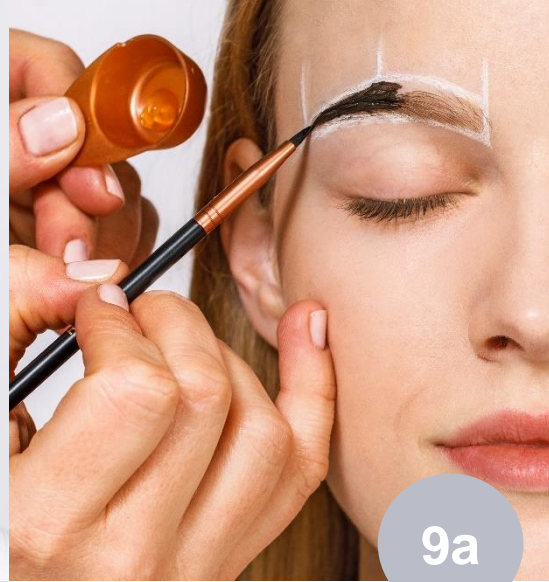
Ideal for: Customers who want a natural look and where no remodeling of the eyebrows is necessary.





Repeat!

The Ombré Shading differs from the Full Brow technique in the way the **Activator Gel** is applied. Therefore, repeat steps 1-8 of the Full Brow technique.



Activator Gel

Use a clean brush. Open the **Activator Gel (Step 2)**. Squeeze a pea-sized amount of the **Activator Gel** into a clean cosmetic dish and apply the Activator Gel to brows & skin. **Start brushing at the end of the brow.**



Activator Gel

Continue to the middle and front part. Work very precisely. **Application time: 1 minute** (Activator Gel lets the hair appear to be very dark, but this is not the final tinting result)



Use rubber spoolie

In the front area of the eyebrow, apply the **Activator Gel** with the spoolie and be careful not to touch the entire surface of the skin. **Application time: 1 minute**



Use rubber spoolie!

In the front area of the eyebrows, focus on the hairs instead of the skin. Slightly brush the eyebrows to create a smooth effect.



Remove

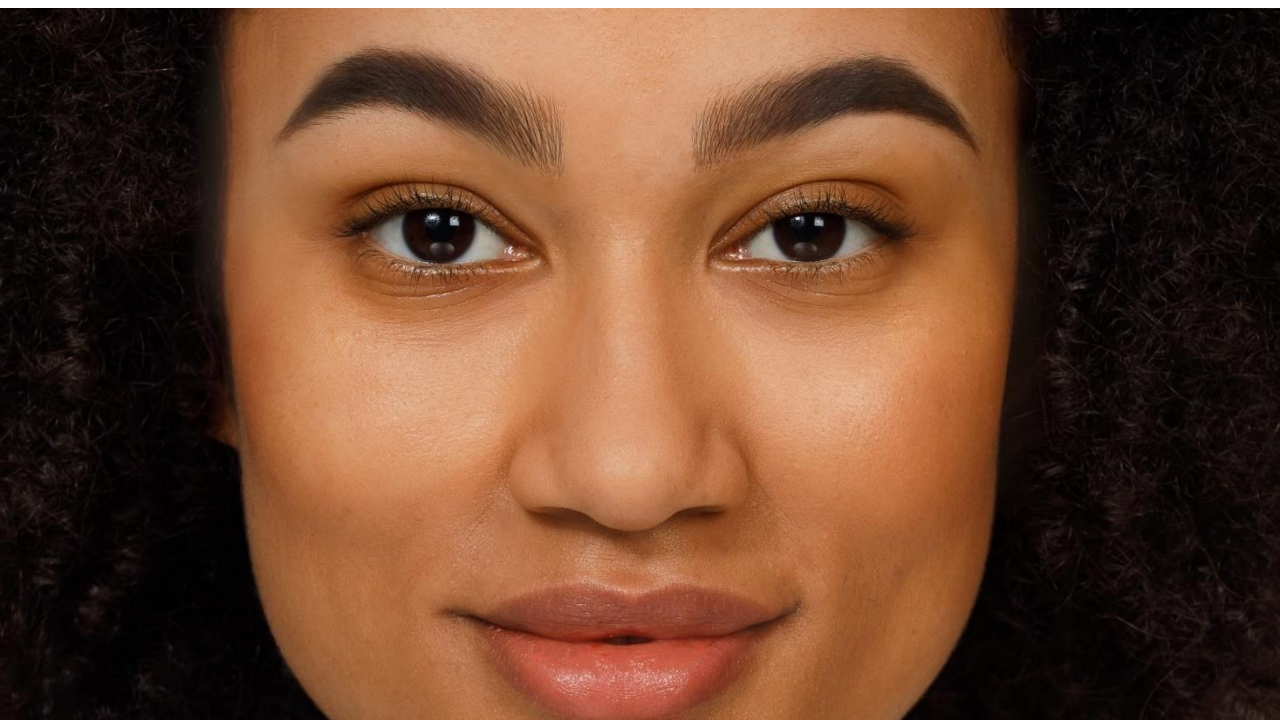
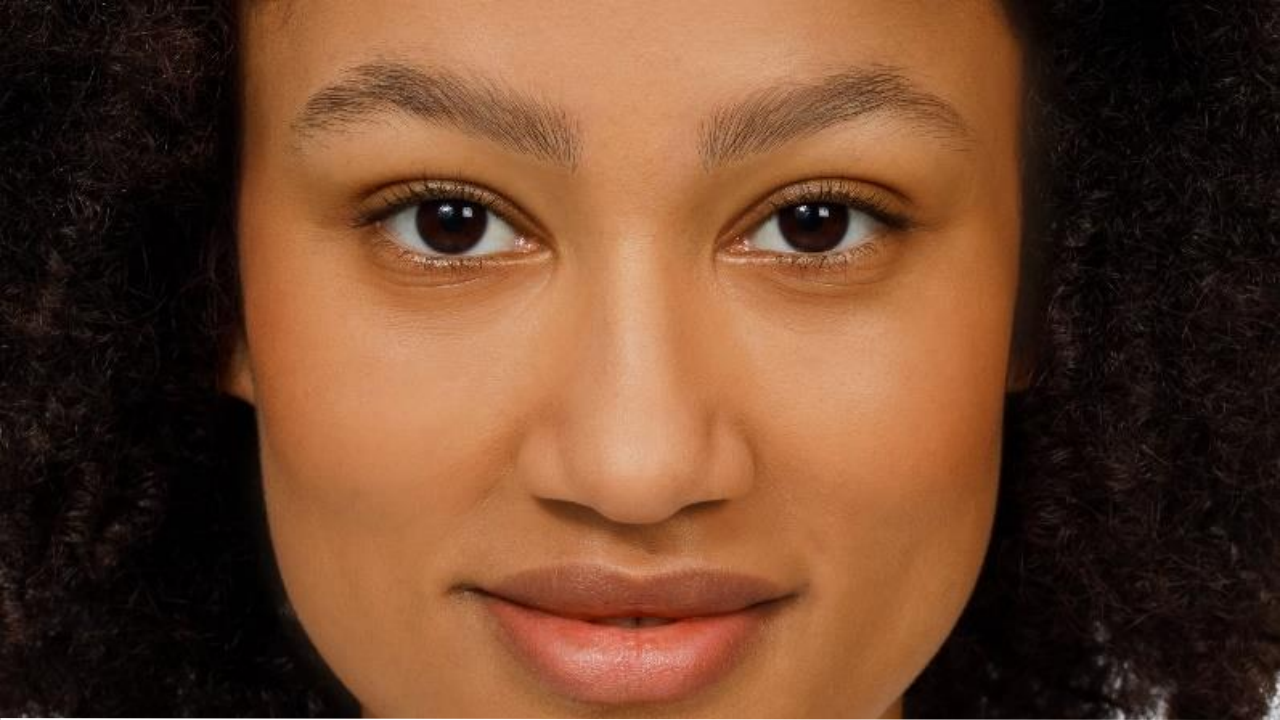
Remove Activator Gel with a wet cotton pad. Remove any unwanted stains or correct the shape with **RefectoCil Intense Brow[n]s Tint Remover**.

Now you can shape the brows. Apply the **RefectoCil Styling Gel** to nourish the eyebrow hair and provide shine



Effect

Ombé Shading Look



BROW FILLING TECHNIQUE



The Brow Filling Technique provides a gently restrained effect. Here, the front area of the eyebrow is completely omitted and not coloured. The transition between colour and natural hair, is worked out with the rubber spoolie.

Ideal for: Customers who naturally have particularly dense, dark and intense eyebrows but want more contour and definition.

03_

INTENSIFYING

RefectoCil
Intense Brow[n]s™



Cleaning

Clean eyebrows before tinting using the **RefectoCil Micellar Eye Make-up Remover** (or **RefectoCil Brow & Lash Foam**). If the skin is very dry, exfoliate the eyebrow area with a soft exfoliant.



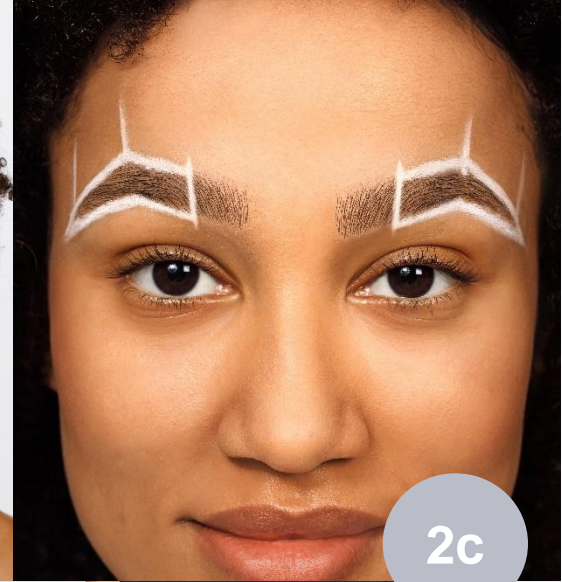
Mapping

Measure the eyebrows according to the 3-point method, see Full Brow Technique. Connect the lines into a frame.



Mapping

Leave out the front third and draw a boundary line if necessary.

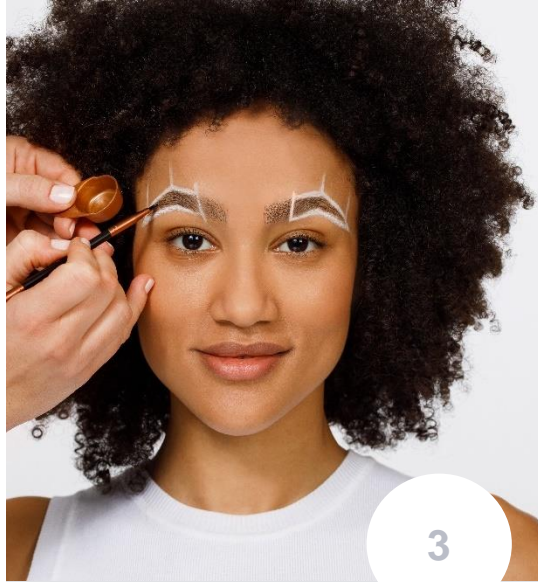


Mapping

The front area is not being tinted to create a very soft and natural make up effect. The next steps are applied only in the marked frame.

03

INTENSIFYING



Intensifying Primer

Choose the product according to the skin type. Open the **Intensifying Primer** and put a pea-sized amount into one of the cosmetic dishes. Apply it to brows and skin only in the measured template.

Application time: 4 minutes.



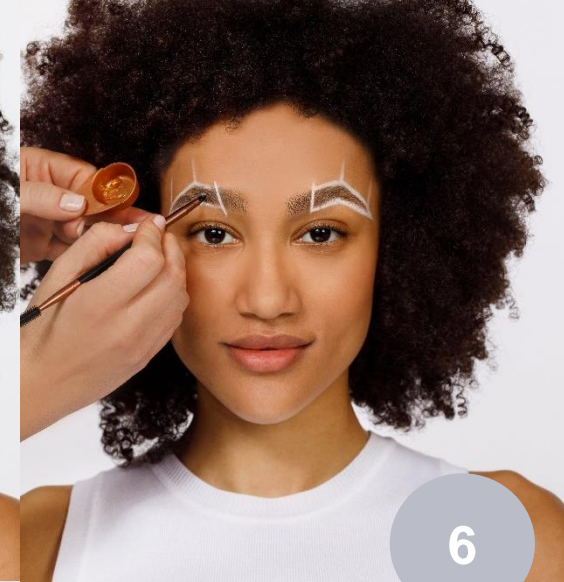
Remove

Remove the **RefectoCil Intense Brow[n]s Intensifying Primer** using a dry cotton swab.



Wait!

Important: Let the brows dry for **4 minutes** before the next step!
To achieve best results the brows have to be dry before the next step.



Base Gel

Use a clean brush. Select the desired colour. Open the **Base Gel (Step 1)** and squeeze a pea-sized amount of it into a clean cosmetic dish. Apply the **Base Gel** to brows & skin evenly in the direction of hair growth. **Application time: 2 minutes!**

03

INTENSIFYING



7

Remove

Remove **Base Gel** using a dry cotton swab.



8

Wait!

Important: Let the brows dry for **4 minutes** before the next step.



9a

Activator Gel

Use a clean brush. Open the **Activator Gel (Step 2)**. Squeeze a pea-sized amount of the **Activator Gel** into a clean cosmetic dish and apply the Activator Gel to brows & skin. **Start brushing at the end of the brow.**



9b

Activator Gel

Continue to the middle last part of the template. Work very precisely. **Application time: 1 minute**

03

INTENSIFYING



The transition

In the front area of the template, use the spoolie and brush a little beyond the boundary line to create a smooth transition to the untreated hairs.



Remove

Remove Activator Gel with a wet cotton pad.



Final touch

Remove any unwanted stains using a dry cotton swab with the **RefectoCil Intense Brow[n]s Tint Remover**. Use the **RefectoCil Intense Brow[n]s Tint Remover** to correct the shape of the brows if needed or to remove tint spots.



Effect

Brow Filling Look